

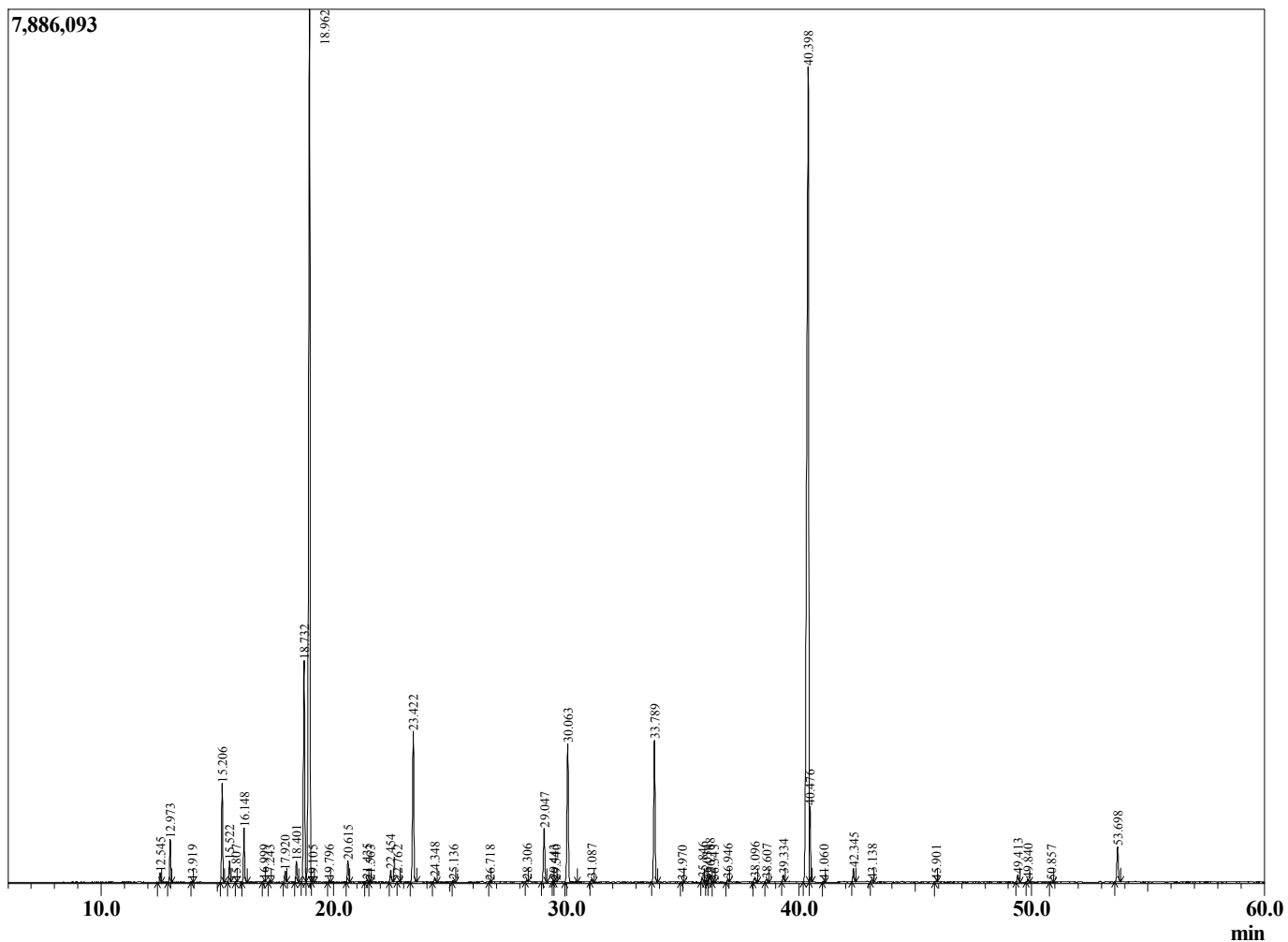
Sample Information

Analyzed : 9/18/2020 1:48:59 PM
 Sample Type : Essential Oil
 Sample Name : Elettaria cardamomum
 Injection Volume : 0.10

Cardamom
 Lot# IDZ12-ZT
 Country: India



Chromatogram Elettaria cardamomum



R.Time	Name	Area%
12.545	alpha-Thujene	0.24
12.973	alpha-Pinene	1.01
13.919	Camphene	0.03
15.206	Sabinene	2.43
15.522	beta-Pinene	0.53
15.807	6-Methyl hept-5-en-2-one	0.02
16.148	Myrcene	1.40
16.999	Octanal	0.05
17.243	alpha-Phellandrene	0.04
17.920	alpha-Terpinene	0.29
18.401	para-Cymene	0.59
18.732	Limonene	6.90
18.962	1,8-cineole	28.07
19.105	cis-beta-Ocimene	0.02
19.796	trans-beta-Ocimene	0.05
20.615	gamma-Terpinene	0.61
21.435	cis-Linalool oxide (furanoid)	0.07
21.563	Unidentified	0.02
22.454	Terpinolene	0.36
22.762	para-Cymenene	0.01
23.422	Linalool	4.42
24.348	Unidentified	0.15
25.136	cis-para-Menth-2-en-1-ol	0.05
26.718	Camphor	0.04
28.306	delta-Terpineol	0.04
29.047	Terpinen-4-ol	1.63
29.443	para-Cymen-8-ol	0.03
29.540	Unidentified	0.02
30.063	alpha-Terpineol	4.50
31.087	Octyl acetate	0.08
33.789	Linalyl acetate	4.53
34.970	Geranial	0.03
35.846	Terpinyl formate isomer	0.13
36.034	Unidentified	0.04
36.168	Bornyl acetate	0.25
36.343	Isobornyl acetate	0.03
36.946	4-Terpinenyl acetate	0.08
38.096	delta-Terpinyl acetate	0.15
38.607	Methyl geranate	0.11
39.334	beta-Terpinyl acetate	0.20
40.398	alpha-Terpinyl acetate	36.91
40.476	gamma-Terpinyl acetate	1.70
41.060	Neryl acetate	0.04
42.345	Geranyl acetate	0.41
43.138	beta-Elemene	0.08
45.901	alpha-Terpinyl propionate	0.04
49.413	beta-Selinene	0.25
49.840	alpha-Selinene	0.08
50.857	gamma-Cadinene	0.06
53.698	trans-Nerolidol	1.18
		100.00